



Plug-in cable tie mount that insets into screw holes

**Features**

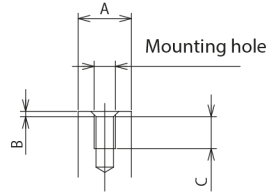
- Plug-in mounting in screw hole is available without tool.

**Material**

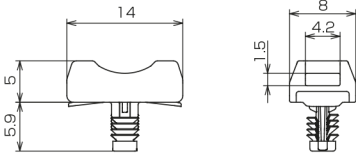
- Nylon 66 (Color : Natural)

UL94 V-2

**Installation specifications**



Recommended mounting hole



Part No.	A	B	C	Bundle diameter / Cable tie size	Mounting hole size	Std. Package
VLTMS-1408-M4	$\geq \phi 15$	$\leq 1$	$\geq 7$	Max thickness 1.3xWidth 4	M4 screw hole (Thread pitch:0.7)	100 pcs.

(Unit : mm)