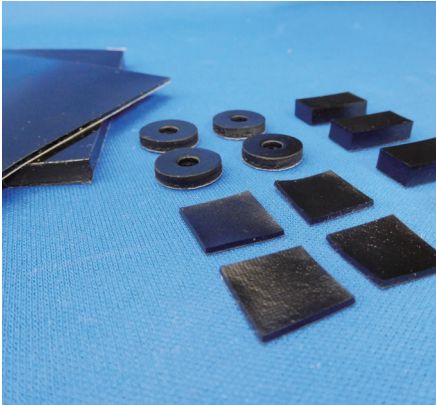


KG-GEL 80TW SHEET / TWG80

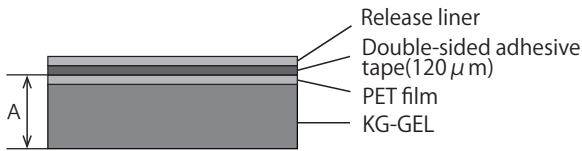


Vibration/shock isolator GEL that withstands heat

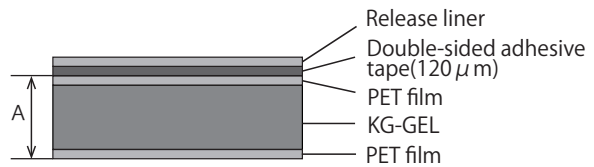
- Soft material isolates shock waves from low frequencies, and prevents them from traveling to devices and components.
- No siloxane outgassing.
- Injection molding allows any shape formation required.

■ Cross-section view

Surface self-adhesive type / TWG80F1



Surface non self-adhesive type / TWG80F2



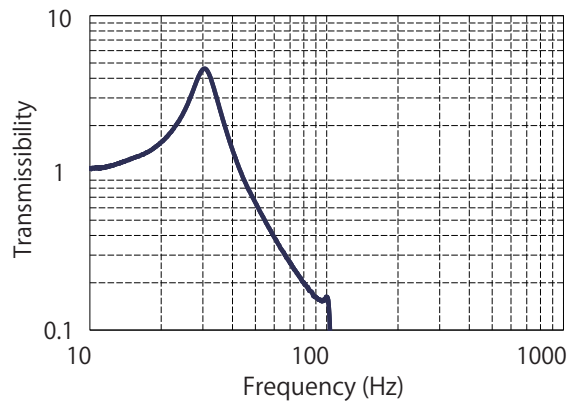
■ Properties

(Values not guaranteed)

Category	Test method	Unit	TWG80
Material	—	—	TPS
Color	—	—	Black
Thickness(A)	—	mm	1.0/2.0 3.0/4.0/5.0
Hardness	JIS K 6253	ASKER FP	83
Specific gravity	—	—	0.91
Tensile strength	JIS K 6251	MPa	1.0
Elongation	JIS K 6251	%	728
Flammability	UL94	—	HB equivalent
Resonant frequency	—	Hz	30.5
Maximum vibration transmissibility	—	—	4.6
Loss Factor ^{※1}	—	—	0.22
crossover frequency	—	Hz	43.6
Operating temperature	—	°C	-20~100

※1) Measured by FWHM method

● Vibration transmission characteristics



Test conditions

Specimen: □5mm, t=3mm

Load : 200g

No. of support: 4 points (in corner)

Vibration acceleration: 0.4G

- The specifications are for reference only, and not a guarantee. Information may change without notice.
- Any reprinting or copying of content in this document is prohibited without our prior consent.

KGS KITAGAWA INDUSTRIES CO.,LTD.

KITAGAWA INDUSTRIES CO.,LTD.
Tel: 81-587-34-3561 <http://www.kitagawa-ind.com>
KITAGAWA GmbH
Tel: 49-6104-60009-0 <http://www.kitagawa.de>
KITAGAWA INDUSTRIES(TAIWAN)CO.,LTD.
Tel: 886-2-2698-8833 <http://www.kgtw.com.tw>

KITAGAWA INDUSTRIES America, Inc.
Tel: 1-408-971-2055 <http://www.kgs-ind.com>
KITAGAWA ELECTRONICS(SINGAPORE)PTE.LTD.
Tel: 65-6560-6511 <http://www.kitagawa.com.sg>
KITAGAWA INDUSTRIES (H.K.) LIMITED
Tel: 852-2612-1161 <http://www.kitagawa.com.hk>

SHANGHAI KITAGAWA INDUSTRIES CO.,LTD.
Tel: 86-21-5865-2766
KITAGAWA ELECTRONICS(THAILAND)CO.,LTD.
Tel: 66-35-350-201 <http://www.kitagawa-ind.com/thai/index.html>
KITAGAWA TECHNOLOGY(SHENZHEN)CO.,LTD.
Tel: 86-0755-2396-3200