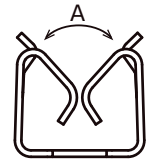


Automated mounting applicable fixture "On-Board Clip" for shielding can.

Feature

- Clip structure enables easy removal of shielding can.
- Multi-point GND is provided to shielding can. Improved shielding effect can be achieved.
- OGCP-502423:Wide opening (A) provides easy insertion of a shielding can.
- OGCP-1182435:Separate structure of clip and support portion resistant to side slide loading.
- OGCP-702020:Locking structure provides "click feel" on installation. It provides certainty and improved workability.



ON-BOARD (with support for automated mounting)

OGCP-1182435

Material : Phosphor bronze for spring
 Surface treatment : Sn reflow plating
 Applicable thickness : t=0.3±0.02

OGCP-650813R

Material : Phosphor bronze for spring
 Surface treatment : Sn reflow plating
 Applicable thickness : t=0.15~0.2

OGCP-650813G

Material : Titanium Copper alloy
 Surface treatment : Partial Au plating(Ni plated contacts)
 Applicable thickness : t=0.15±0.03

OGCP-502423

Material : Phosphor bronze for spring
 Surface treatment : Sn reflow plating
 Applicable thickness : t=0.28~0.56

OGCP-702020

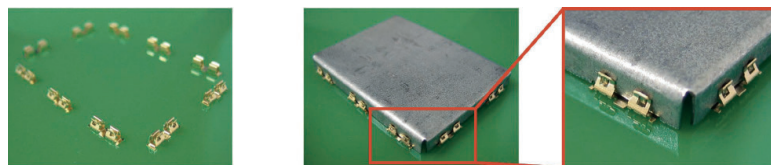
Material : Phosphor bronze for spring
 Surface treatment : Sn reflow plating
 Applicable thickness : t=0.3±0.02

OGCP-702020G

Material : Phosphor bronze for spring
 Surface treatment : Partial Au plating
 Applicable thickness : t=0.3±0.02

Unit : mm

Installation example



※Suffix "G" means Au plating. Please contact our sales representatives for details.

※Shielding can fixing is not guaranteed if the clip only is used.
 ※Verification of actual use conditions is required prior to use.
 ※Please confirm "Notes for Onboards series" on page 2 prior to purchase.

Contacts

Grounding components

Clips

Clamps