

Grounding components applicable to narrow clearance

Feature

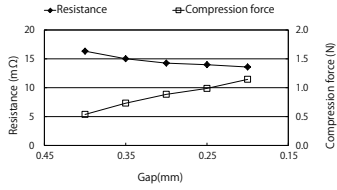
- It is surface mount components with space-saving and low contact pressure.
- It enables high restorability and contributes to low height design of the equipment.
- Applicable clearance 0.35 mm or less.

Material

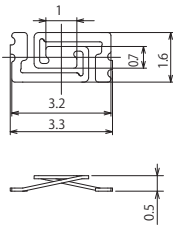
- Basis material: Phosphor bronze for spring (t0.1mm)
- Surface treatment: Sn reflow plating (Underlying Cu plating)

Properties

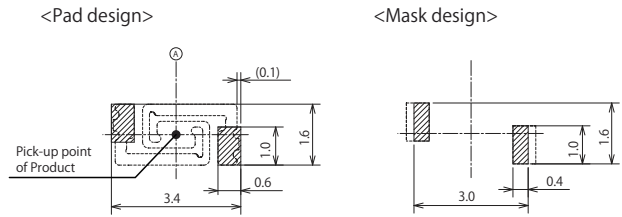
● Compression force vs Electric resistance



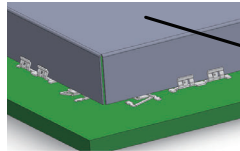
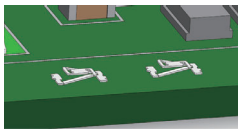
● Dimensions



● Recommended pad design (mounting surface side top view)



● Application



Shielding can

Reference

■ Metal grouping (reference)

※Galvanic corrosion may occur by contact with other metals.

anode			
Group I	Group II	Group III	Group IV
Mg	Al	Cd plating	Brass
Mg alloy	Al alloy	carbon steel	stainless steel
Al	Zn · Zn plating	Fe	Be-Cu
Al alloy	Cr plating	Ni-Cr plating	Cu, Cu alloy
Zn · Zn plating	Cd plating	Sn · Sn plating	Ni-Cu alloy
Cr plating	carbon steel	Sn · Pb solder	Monel
	Fe	Pb	Ag
	Ni, Ni plating	Brass	Graphite
	Sn, Sn plating	stainless steel	Rb
	Sn · Pb solder	Be-Cu	Ti
		Cu, Cu alloy	Pt
		Ni-Cu alloy	Au
cathode			