

Snap-mount mini clamp

Features

- Space-saving compact type.

Material

- Nylon 66 (Color: Natural)

UL94 V-2

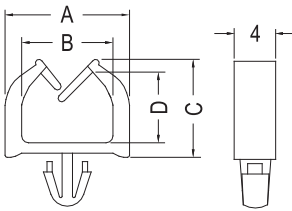


Snap Mounting



Round hole

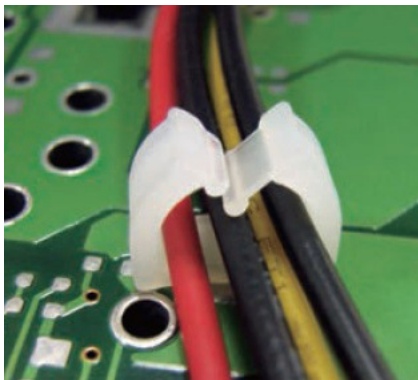
NXT-6/7



CHASSIS ØE
THICKNESS 1.0~1.6

Part No.	A	B	C	D	E	Std. Package
NXT-6	12.0	8.8	11.5	8.5	3.5	1000
NXT-7	9.2	6.8	7.6	5.0	3.0	2000

(Unit: mm)



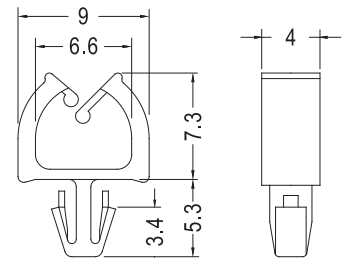
NXT-10

Material

- Nylon 66 (Color: Natural)

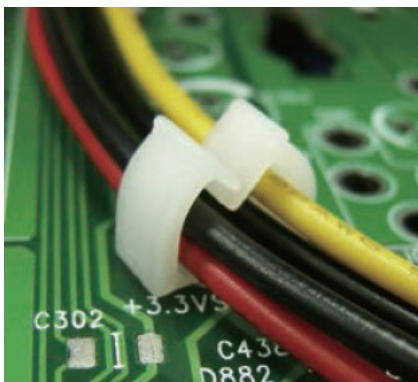
UL94 V-2

Std. Package: 1000 pcs.



CHASSIS Ø3
THICKNESS 1.6

(Unit: mm)

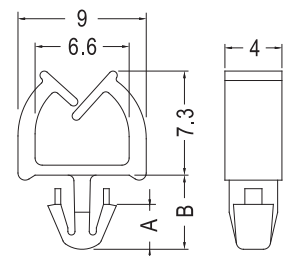


NXT-11

Material

- Nylon 66 (Color: Natural)

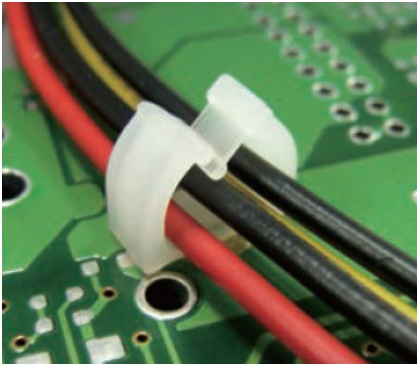
UL94 V-2



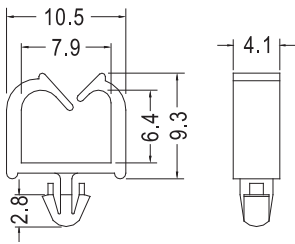
CHASSIS Ø3.5

Part No.	A	B	Chassis Thickness	Std. Package
NXT-11	3.2	5.2	1.6	1000
NXT-11S	2.8	4.15	1.0	

(Unit: mm)



NXT-12



CHASSIS Ø3.0
THICKNESS 0.8~1.6

Snap-mount mini clamp

Features

- Space-saving compact type.

Material

- Nylon 66 (Color: Natural)

UL94 V-2

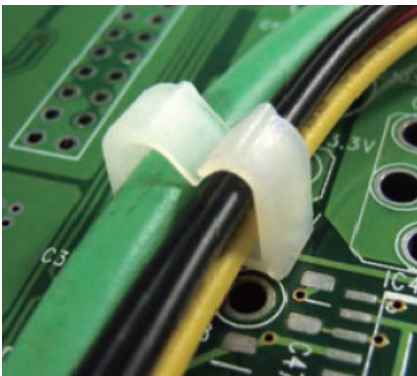
Std. Package: 1000 pcs.



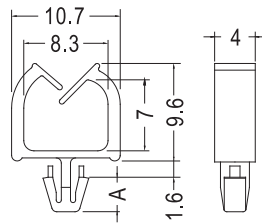
Snap Mounting



Round hole



NXT-15



CHASSIS Ø3.0
THICKNESS 1.6

Part No.	A	Std. Package
NXT-15	3.4	1000
NXT-15S	2.4	

(Unit: mm)