

## Toroidal cores with removable fixture

### Feature

- Snap fastener for re-use is available for the product with fixture "GTFCR".

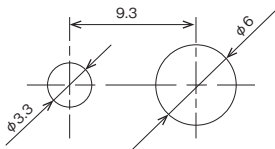
### Material

- Ferrite Core : Soft ferrite
- Housing : PA66 (Color : Light gray / Flammability : UL94V-0)

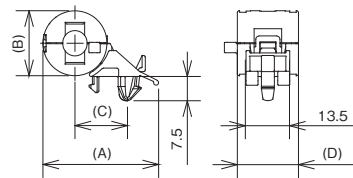
Unit : mm

Part No.	Profile	Applicable cable diameter	A	B	C	D	Impedance $\Omega$ /100MHz (1turn)
GTFCR-16-8-16	①	Max. $\phi$ 7.2	35.8	20.1	16.3	21.9	$\approx$ 55
GTFCR-41-27-16	②	Max. $\phi$ 26	55.2	44.5	23.6	19.6	$\approx$ 50

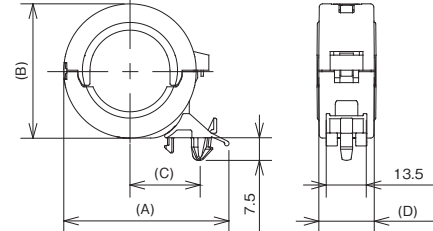
Mount hole



Profile①



Profile②



※The values are measured data for reference, not guaranteed.