

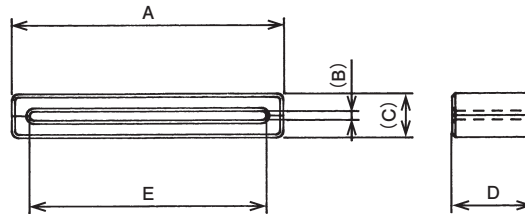
Split core type for easy assembly on wired or connected cables

Feature

- For filtering noise emission from ribbon cables, FPC etc..

Material

- Soft ferrite



Unit: mm

Part No.	A	(B)	(C)	D	E	Impedance* Ω/100MHz (1 turn)
GSSH-33.5-12	33.5	1.2	6.6	12.0	27.0	≧ 35
GSSH-33.5-20	33.5			20.0	27.0	≧ 50
GSSH-40-12	40.0			12.0	34.8	≧ 35
GSSH-45-12	45.2			12.0	40.0	≧ 35

\*Contact us for the measurement conditions.

Impedance vs frequency

