

Split core for convenient fitting on pre-wired cables

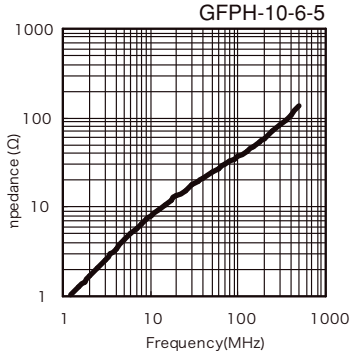
Feature

- GFPH ferrite core for effective filtering emission noise from FPC.

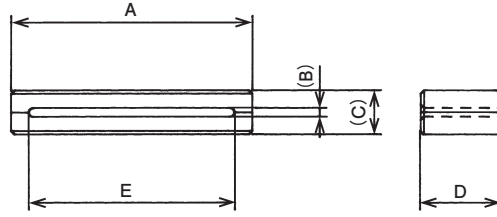
Material

- Soft ferrite

Impedance vs frequency



*The values are measured data for reference, not guaranteed.



Unit:mm

Part No.	A	(B)	(C)	D	E	Impedance* Ω/100MHz (1 turn)
GFPH-10-6-5	10.0	1.8	5.0	6.0	6.8	≥ 25

※Contact us for the measurement conditions.

High-frequency cores

Split ferrite clamp

Non split type