

Edge protection cable clamp

Features

- Easy insertion of cables through openings and protection of cables from sharp edges of chassis etc.



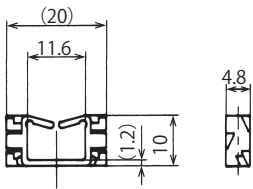
Insertion Mounting

Material

- Nylon 66 (Color : Natural)
 - UL94 V-2 : EDS-1~3
 - UL94 V-0 : EDS-4, -0607M

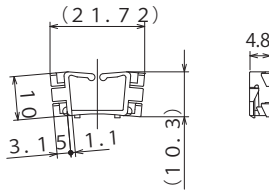
※ For V0 type, "V0" is added to the end of the part No.
(With regard to lot size and lead time, please contact us.)

EDS-1 ~3



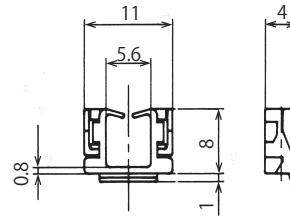
Specification drawing

EDS-4

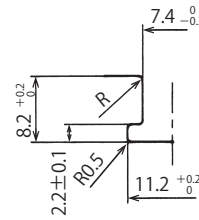
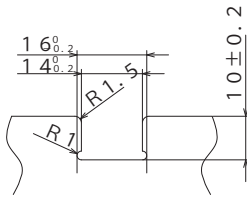
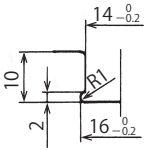


Specification drawing

EDS-0607M



Specification drawing



Part No.	Panel thickness	Color	Std. Package
EDS-1	0.8~1.2	Black	100 pcs.
EDS-2	1.2~1.6	Natural	
EDS-3	1.6~2.0	Gray	
EDS-4	0.8~2.0	Natural	1,000 pcs.
EDS-0607M	0.8~1.2	Black	

UL ...UL1565 recognized product

(Unit : mm)